



# R e m o t e   a i r   v a l v e s

## Individual mounting

Inline	
--------	--

## Manifold mounting

cylinder ports in valve	with shut-off valve	
----------------------------	------------------------	--

Function	Port size	Flow (Max)	Individual mounting
<b>5/2 - 5/3</b>	<b>G1/4"</b>	<b>1400 NI/Min</b>	Inline

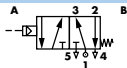
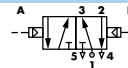
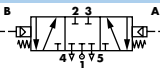
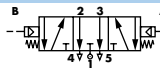
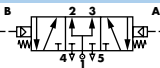
**OPERATIONAL BENEFITS**

1. Balanced spool, immune to variations of pressure.
2. Short stroke with high flow.
3. The piston (booster) provides maximum shifting forces.
4. Powerful return thanks to the combination of mechanical and air springs.
5. Bonded spool with minimum friction, shifting in a glass-like finished bore.
6. Wiping effect eliminates sticking.
7. Low leakage rate.



**HOW TO ORDER**

Reset

Port size	5/2 Single operator	5/2 Double operator	5/3 Closed centre	5/3 Open centre	5/3 Pressure centre
<b>G1/4"</b>	 180001-115-0003	 180003-115-0003	 180304-515-0304	 180304-615-0304	 180304-815-0304

Air pilot port : G 1/8".

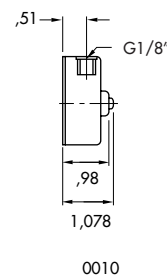
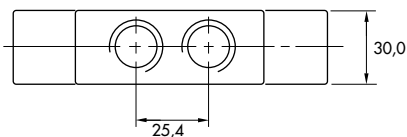
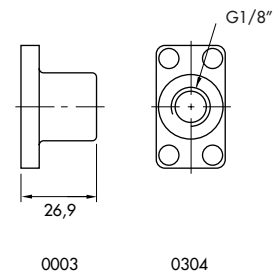
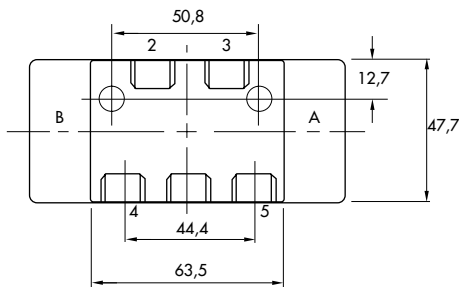
Options : [click for side pilot port \(replace code 0003 by 0010\) \(2 positions valves only\).](#)

**TECHNICAL  
DATA**

<b>Fluid :</b>	Compressed air, vacuum, inert gases
<b>Pressure range :</b>	Vacuum to 14 bar
<b>Air signal pressure :</b>	Single operator and 3 positions : 1.4 to 10 bar      Double operator : 0.7 to 10 bar
<b>Lubrication :</b>	Not required, if used select a medium aniline point lubricant (between 80°C and 100°C)
<b>Filtration :</b>	40 µ
<b>Temperature range :</b>	-18°C to +50°C
<b>Orifice :</b>	7 mm
<b>Flow (at 6 bar, ΔP=1bar) :</b>	G 1/4" - G 3/8" : 1400 Nl/min (C <sub>v</sub> 1.4)
<b>Leak rate :</b>	50 cm <sup>3</sup> /min

- Spare parts :      • Remote air operator (2 positions) : 180003. • Remote air operator (3 positions) : 180304.
- Options :            • NPTF threads. • G3/8" threads.

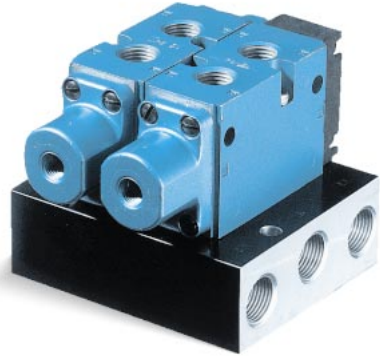
**DIMENSIONS**



Function	Port size	Flow (Max)	Circuit bar mounting
<b>5/2 - 5/3</b>	<b>G1/4"</b>	<b>1300 NI/Min</b>	cylinder ports in valve

**OPERATIONAL BENEFITS**

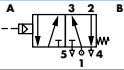
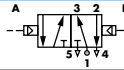
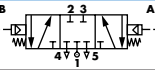
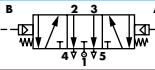
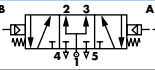
1. Balanced spool, immune to variations of pressure.
2. Short stroke with high flow.
3. The piston (booster) provides maximum shifting forces.
4. Powerful return thanks to the combination of mechanical and air springs.
5. Bonded spool with minimum friction, shifting in a glass-like finished bore.
6. Wiping effect eliminates sticking.
7. Low leakage rate.



**HOW TO ORDER**

Reset

HOW TO ORDER VALVE FOR CIRCUIT BAR MOUNTING

Port size	5/2 Single operator	5/2 Double operator	5/3 Closed centre	5/3 Open centre	5/3 Pressure centre
					
<b>G1/4"</b>	180001-175-0003	180003-175-0003	180304-575-0304	180304-675-0304	180304-875-0304

Air pilot port : G 1/8".

HOW TO ORDER CIRCUIT BAR \*\*

Port size (Spacing 31 mm)	Standard circuit bar	Circuit bar with flow regulators (two per station)
<b>G3/8"</b>	EBM800A-001B-xx	EBM800A-002B-xx

\*\* Other options available. Consult factory.

Number of stations (03=3 stations)

Options : click for side pilot port (replace code 0003 by 0010) (2 positions valves only).

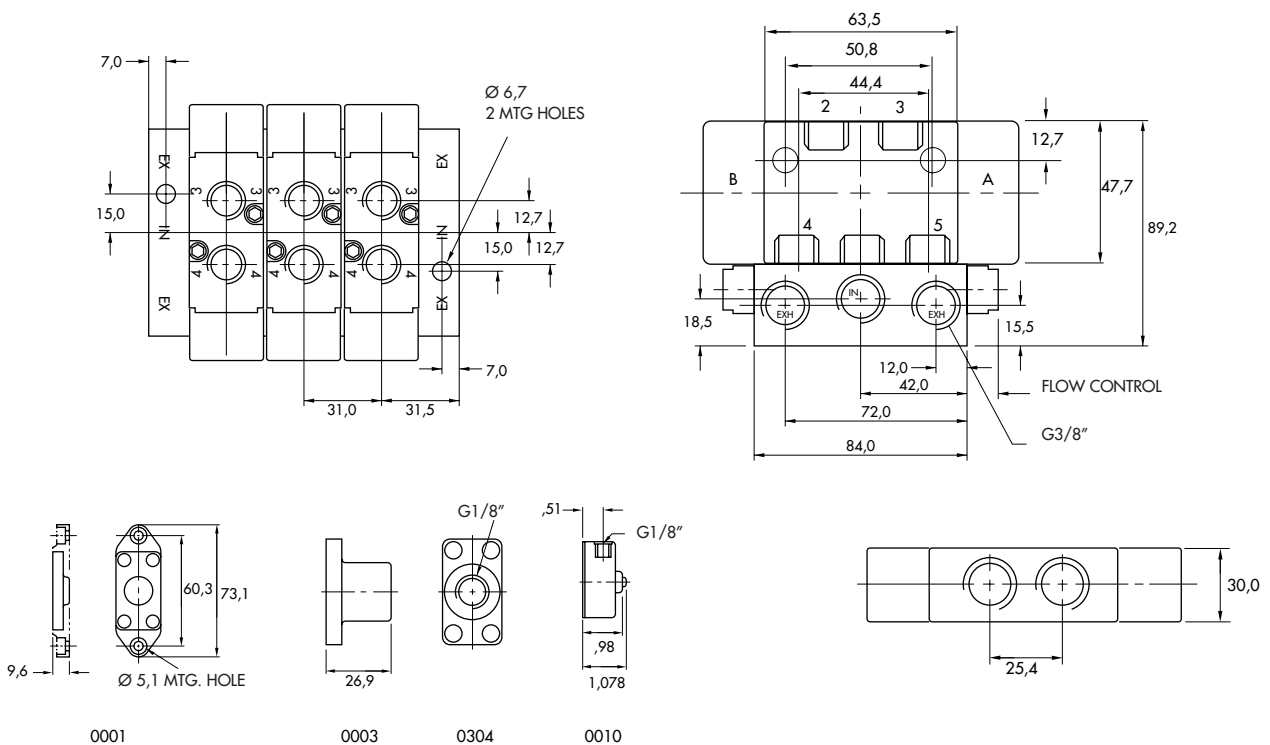
Note : click for valves mounted on base at the factory (add -9 to the model number).

**TECHNICAL  
DATA**

<b>Fluid :</b>	Compressed air, vacuum, inert gases
<b>Pressure range :</b>	Vacuum to 14 bar
<b>Air signal pressure :</b>	Single operator and 3 positions : 1.4 to 10 bar      Double operator : 0.7 to 10 bar
<b>Lubrication :</b>	Not required, if used select a medium aniline point lubricant (between 80°C and 100°C)
<b>Filtration :</b>	40 µ
<b>Temperature range :</b>	-18°C to +50°C
<b>Orifice :</b>	7 mm
<b>Flow (at 6 bar, ΔP=1bar) :</b>	G 1/4" - G 3/8" : 1300 Nl/min (C <sub>v</sub> 1.3)
<b>Leak rate :</b>	50 cm <sup>3</sup> /min

- Spare parts :      • Remote air operator (2 positions) : 180003. • Remote air operator (3 positions) : 180304. • Blanking plate : M-08008.
- Options :            • NPTF threads. • Isolation of inlet and/or exhaust. • G3/8" threads.

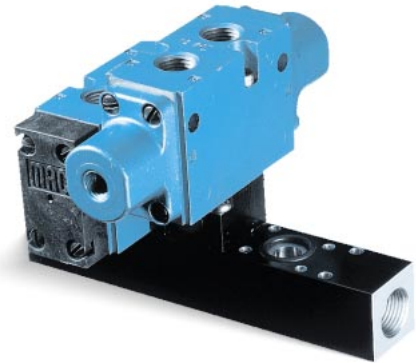
**DIMENSIONS**



Function	Port size	Flow (Max)	Circuit bar mounting
<b>5/2 - 5/3</b>	<b>G1/4"</b>	<b>1300 NI/Min</b>	with shut-off valve

**OPERATIONAL BENEFITS**

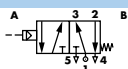
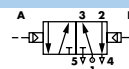
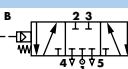
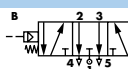
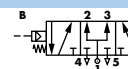
1. Balanced spool, immune to variations of pressure.
2. Short stroke with high flow.
3. The piston (booster) provides maximum shifting forces.
4. Powerful return thanks to the combination of mechanical and air springs.
5. Bonded spool with minimum friction, shifting in a glass-like finished bore.
6. Wiping effect eliminates sticking.
7. Low leakage rate.



**HOW TO ORDER**

Reset

HOW TO ORDER VALVE FOR CIRCUIT BAR MOUNTING

Port size	5/2 Single operator	5/2 Double operator	5/3 Closed centre	5/3 Open centre	5/3 Pressure centre
					
<b>G1/4"</b>	180001-175-0003	180003-175-0003	180304-575-0304	180304-675-0304	180304-875-0304

Air pilot port : G 1/8".

HOW TO ORDER CIRCUIT BAR \*\*

Port size (Spacing 31 mm)	Standard circuit bar	Circuit bar with flow regulators (2 per station)
<b>G3/8"</b>	EI800A-001B-xx	EI800A-002B-xx

\*\* Other options available. Consult factory.

Number of stations (03=3 stations)

Options : click for side pilot port (replace code 0003 by 0010) (2 positions valves only).

Note : click for valves mounted on base at the factory (add -9 to the model number).

**TECHNICAL  
DATA**

<b>Fluid :</b>	Compressed air, vacuum, inert gases
<b>Pressure range :</b>	Vacuum to 14 bar
<b>Air signal pressure :</b>	Single operator and 3 positions : 1.4 to 10 bar      Double operator : 0.7 to 10 bar
<b>Lubrication :</b>	Not required, if used select a medium aniline point lubricant (between 80°C and 100°C)
<b>Filtration :</b>	40 µ
<b>Temperature range :</b>	-18°C to +50°C
<b>Orifice :</b>	7 mm
<b>Flow (at 6 bar, ΔP=1bar) :</b>	G 1/4" - G 3/8" : 1300 Nl/min (C <sub>v</sub> 1.3)
<b>Leak rate :</b>	50 cm <sup>3</sup> /min

Spare parts :      • Remote air operator (2 positions) : 180003. • Remote air operator (3 positions) : 180304.  
 • Blanking plate : M-08011. • Shut-off valve : M-08010.

Options :      • NPTF threads. • Isolation of inlet. • G3/8" threads.

**DIMENSIONS**

